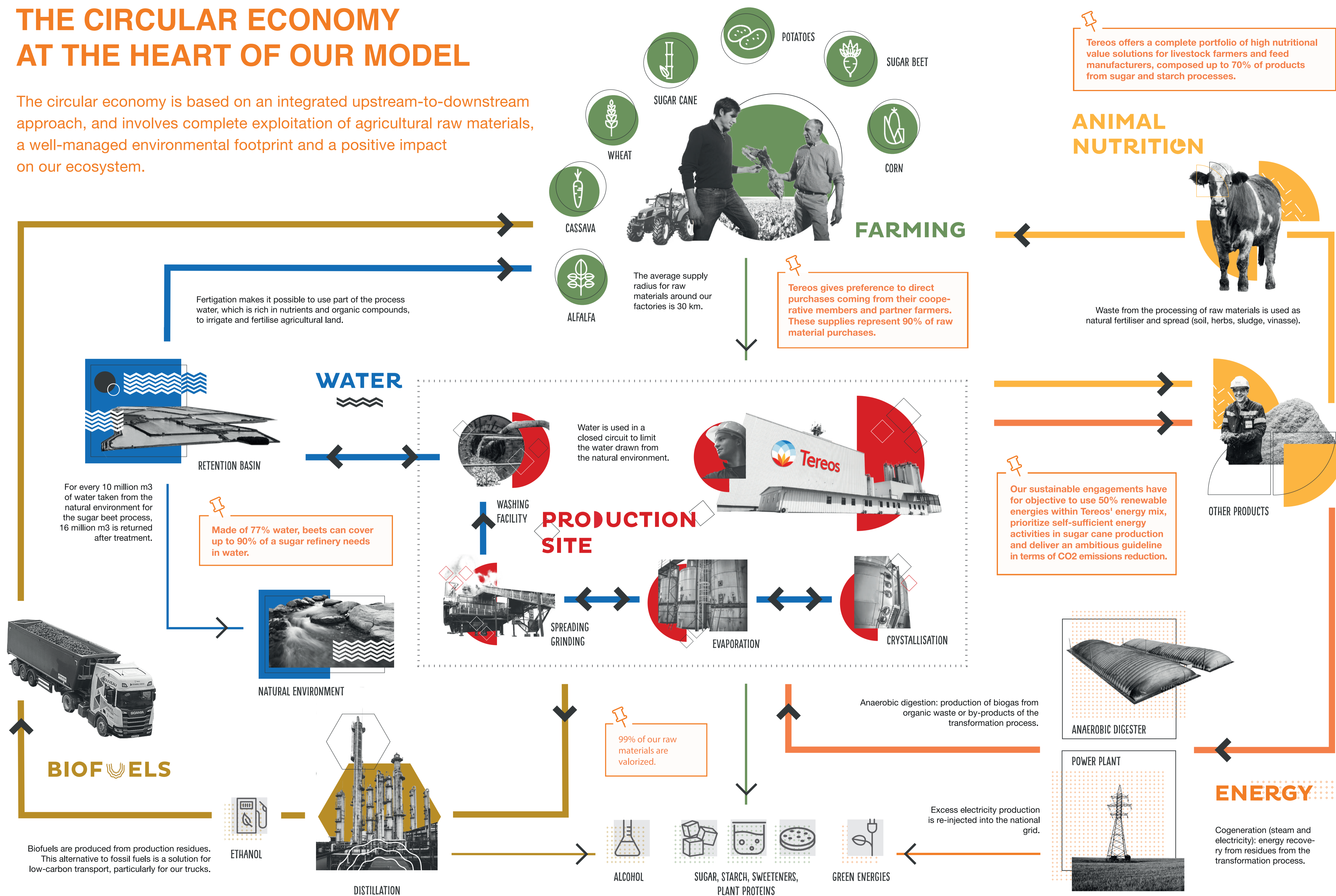


THE CIRCULAR ECONOMY AT THE HEART OF OUR MODEL

The circular economy is based on an integrated upstream-to-downstream approach, and involves complete exploitation of agricultural raw materials, a well-managed environmental footprint and a positive impact on our ecosystem.



This poster is printed on bagasse paper, the fibrous residue from one of the raw materials we process: sugar cane. The "Bagasse" range integrates a fundamental value of sustainable development: the valorization and consequently a reasoned management of our planet's resources. It is composed of annual plants that ensure a very rapid storage of CO² in a sustainable medium: paper.